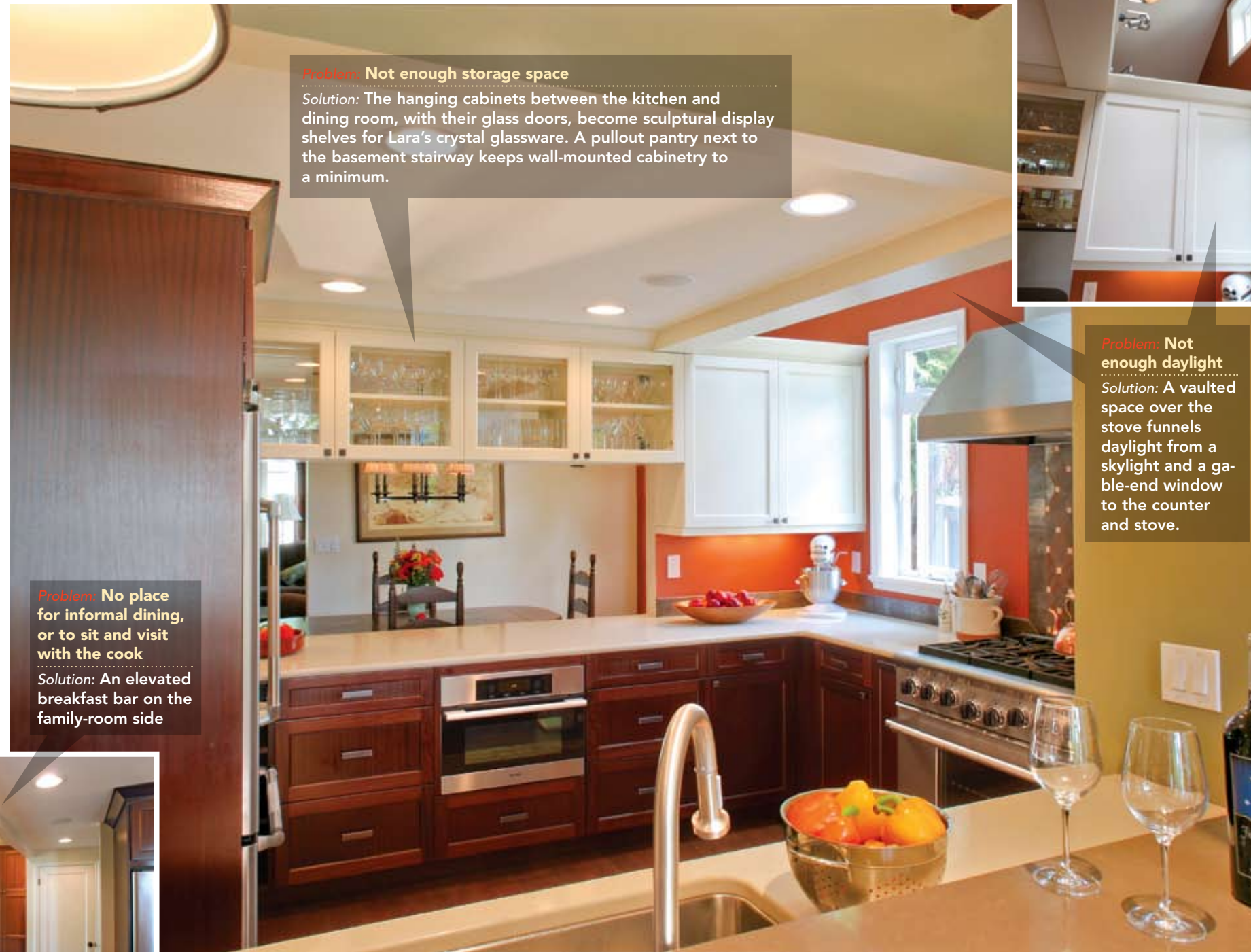


130 sq. ft. Made it possible to expand the kitchen and dining room, and to fix the circulation problems, too

The original kitchen, a poorly designed remnant from a late 1940s postwar spec home was a narrow, galley-style cookery with antiquated appliances, poor lighting, and minimal storage. Trapped between the living-dining room on the street side, and the family room in back, the kitchen was a well-traveled hallway between the two most frequented rooms in the house.

Fixing this bottleneck and creating a first-rate kitchen was high on Eric and Lara's list of home improvement projects. Seattle architect Jim Rymsza solved the kitchen dilemma and made the dining room large enough for Lara's heirloom dining table, with a rectangular addition that pushed the east wall out about 7 ft. The added spaces made room for a hallway and a kitchen that is like a little interior courtyard, with views to the dining and living rooms, and expansively open to the family room.

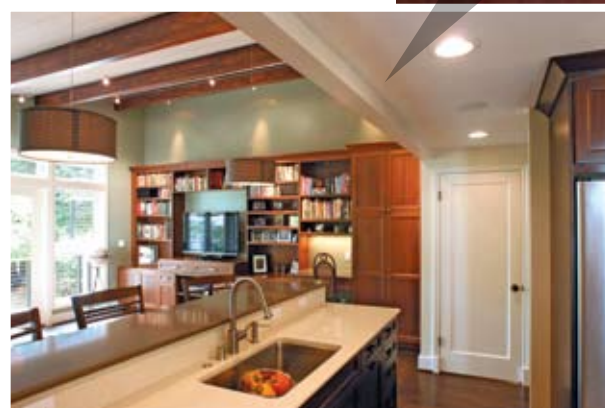


Problem: Not enough storage space
Solution: The hanging cabinets between the kitchen and dining room, with their glass doors, become sculptural display shelves for Lara's crystal glassware. A pullout pantry next to the basement stairway keeps wall-mounted cabinetry to a minimum.



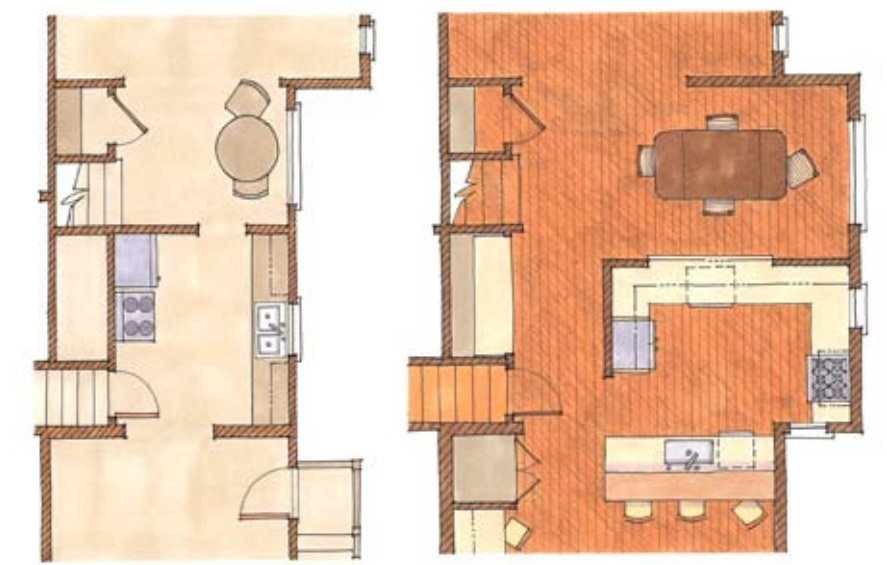
Problem: Not enough daylight
Solution: A vaulted space over the stove funnels daylight from a skylight and a gable-end window to the counter and stove.

Problem: No place for informal dining, or to sit and visit with the cook
Solution: An elevated breakfast bar on the family-room side



"aha!" moment

A desire to get the hallway out of the kitchen drove this design, and pushing the east wall out 7 ft. provided enough extra space to fashion a generous kitchen with lots of counter space and storage.



Cool detail

A boldly patterned tile backsplash behind the stove dials up a rich, earthy rhythm of squares and diagonals that add even more punch to the rusty-red walls.

Notable elements: Refrigerator: Blomberg • Stove: Jenn-air, with downdraft ventilation Dishwasher: Bosch model #TK • Flooring: Marmoleum? • Lighting: Rejuvenation, model #TK Breakfast bar: End-grain Douglas fir

Architects: Jim Rymsza, jARCHITECTS, Seattle www.jarchitect.net **Builder:** S2 Builders, Chad and Jeremy Sandnes www.s2builders.com